



# Barmoor South Moor Farmhouse Barmoor South

Berwick-Upon-Tweed, TD15 2QF

**£1,600 Per Calendar Month**

[www.aitchisons.co](http://www.aitchisons.co)





With fantastic open views of the Cheviot Hills, this superb detached four bedroom farmhouse is located in a rural position within two miles from Lowick village. The property would make an ideal family home, with the benefits of double glazing, oil central heating and large gardens and grounds. The immaculate interior comprises of a lounge, sitting room, modern kitchen/breakfast room, dining room, office and a utility room. On the first floor are four bedrooms, an en-suite shower room and a bathroom. Viewing is recommended.

Pets Considered at Landlords Discretion. No Smokers.

Monthly rental payments are £1600 per month and a deposit of £1846 will be due before moving in.

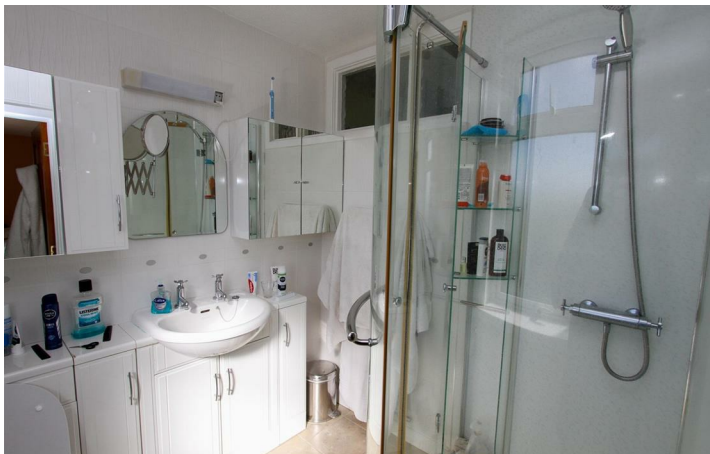
12 months tenancy.

Energy rating D.

Council tax band F.







Important Information You may download, store and use the material for your own personal use and research. You may not republish, retransmit, redistribute or otherwise make the material available to any party or make the same available on any website, online service or bulletin board of your own or of any other party or make the same available in hard copy or in any other media without the website owner's express prior written consent. The website owner's copyright must remain on all reproductions of material taken from this website.

Berwick Office  
36 Hide Hill, Berwick-upon-Tweed  
Northumberland, TD15 1AB

T: (01289) 307571  
F: (01289) 302948  
E: [berwick@aitchisons.co](mailto:berwick@aitchisons.co)

Wooler Office  
25 High Street, Wooler  
Northumberland, NE71 6BU

T: (01668) 281819  
F: (01668) 281717  
E: [wooler@aitchisons.co](mailto:wooler@aitchisons.co)



Zoopla.co.uk

